



CIRRUS FLT PLAN FTD.BERNARD EXT.93014 ACARS.LHRSBRN
P 1 OF 6 BA 399/27 BRU-LHR ETD 1715/27DEC18 A320 G-EUYG
C/S BAW399R P1.0 EBBR-EGLL P0.0 T/O SLOT

56.4 ZFW 1825 ATA TNKS ADVISORY INFORMATION
NO STATS AVAILABLE
60.4 TOW 1715 ATD USED LMC MIN CONT 215
58.6 LAW 0110 TOT LEFT
13.6 PL HOLD W A ACH FL

TRIM MIN COST VAR SPD - FP NO. 1 1556 27DEC18

ROUTE DEF RTE FL240

TIF 1828 42 221NM W/C M13 TOC OAT M35
CONT 5%.... 91 02 WIND 27017
DIVF 1035 25 STN /EGSS FL070 P10 88NM
RES 1063 30 PLAN REM 2.2 TOT RES 2.1
REQ 4017 1.40 COST INDEX 15
ETOPS 0
EXTRA 0 WX ATC
TAXI 200 (20) ELEV BRU R19 184
TANKS 4217 KG ELEV LHR R27R 83
FOUR TWO ONE SEVEN KG **FMC DRAG/FF P 0.0/ P 0.0**

ALT SUMMARY	DIST	TRK	FL	COMP	TIME	FUEL	DIV SPD SCHED
STN/EGSS C1	88	046	070	P02	00.25	1035	COST INDEX 0
LGW/EGKK C2	83	152	080	P02	00.24	983	
BOH/EGHH C3	94	231	080	M04	00.28	1097	
BHX/EGBB C4	111	321	140	M03	00.28	1095	

WEIGHT CHANGE P/M 1000 KG FP 10/FM 0 KG TP 0 TRIP FUEL
SPEED CHANGE CI 0 / M0.65 FM 39 KG TP 0 TRIP FUEL

RMK/ NONE



CIRRUS FLT PLAN

PAGE 2 OF 6 BA 399/27 - PLAN 1 1556 27DEC18

WAYPOINT COUNT		8 CWC	8 (NOT TOC/TOD)			TOT RES	2.1
POSITION	ID/FREQ		ETA/RTA	ATA	TTLT	GDTG	REM REQ
MSA	AWY /ITT/	-TRM-	DIS	TIM	FL	COMP	MACH G/S
BRUSSELS NATIONAL	HELE5N		.../...	...	0.00	221	1.8
2.3	HELE5N /296/	-VAR-	25	05	...	M014	
BR016			.../...	...	0.05	196	1.6
2.3	HELE5N /315/	-314-	7	02	...	M013	
BR017			.../...	...	0.07	189	1.4
2.1	HELE5N /314/	-314-	17	03	...	M012	
HELEN			.../...	...	0.10	172	0.9
0.0	UL179 /000/	-359-	0		...	P001	
TOC			.../...	...	0.10	172	0.9
2.0	UL179 /289/	-289-	20	03	240	M014	.658/382
COSTA	COA110.05		.../...	...	0.13	152	0.8
2.0	UL608 /290/	-290-	10	02	...	M013	.658/382
KEGIT			.../...	...	0.15	142	0.7
2.0	UL608 /290/	-290-	24	03	...	M016	.659/380
SASKI			.../...	...	0.18	118	0.6
2.0	UL608 /290/	-290-	6	01	...	M013	.657/382
INLOD			.../...	...	0.19	112	0.5
2.0	UL608 /290/	-290-	10	02	...	M013	.657/382



CIRRUS FLT PLAN

PAGE 3 OF 6 BA 399/27 - PLAN 1 1556 27DEC18

WAYPOINT COUNT 8 CWC 16 (NOT TOC/TOD) TOT RES 2.1

POSITION	ID/FREQ	ETA/RTA	ATA	TTLT	GDTG	REM	REQ
MSA	AWY /ITT/	-TRM-	DIS	TIM	FL	COMP	MACH G/S
SUMUM		.../...	...	0.21	102		0.5
2.0	L608 /289/	-289-	20	03	...	M013	.657/382
LOGAN		.../...	...	0.24	82		0.3
2.0	LOGA1H /264/	-264-	19	03	...	M013	.657/382
TOD		.../...	...	0.27	63		0.2
2.0	LOGA1H /263/	-264-	1		...	M013	
TRIPO		.../...	...	0.27	62		0.2
2.0	LOGA1H /263/	-264-	5	01	...	M013	
SABER		.../...	...	0.28	57		0.2
2.1	LOGA1H /263/	-264-	10	02	...	M013	
BRASO		.../...	...	0.30	47		0.2
2.4	LOGA1H /263/	-263-	8	02	...	M010	
D083L		.../...	...	0.32	39		0.2
2.3	LOGA1H /263/	-263-	12	02	...	M006	
LAMBOURNE	LAM115.60			.../...	...	0.34	27
2.3	LOGA1H /246/	-247-	27	08	...	M004	0.2
HEATHROW	LOGA1H			.../...	...	0.42	



CIRRUS FLT PLAN

PAGE 4 OF 6 BA 399/27 - PLAN 1 1556 27DEC18

DESTINATION ALTERNATE SUMMARY

ALTN	MSA	VIA
EGSS/22	2.4	BPK7F BPK DCT BKY DCT BUSTA DCT LOREL DCT
INFO/EGKK/08R	2.3	MID4F MID DCT HOLLY DCT WILLO DCT
INFO/EGHH/08	2.4	DCT GASGU DCT SAM DCT BIA DCT
INFO/EGBB/33	2.5	DCT ULTIB T420 WELIN DCT



CIRRUS FLT PLAN

PAGE 5 OF 6 BA 399/27 - PLAN 1 1556 27DEC18

LAT	LONG	WAYPT	ITT	DIS	FL	TMP	SECTOR W/V				
							100	200	310	350	
N5054.1E00429.1		EBBR	296	25							
N5057.1E00419.4		BR016	315	7		M10	29010	27022	25037	25037	
N5102.1E00411.4		BR017	314	17		M23	29010	27022	25037	25037	
N5114.1E00352.2		HELEN	000	0		M34	29010	27022	25037	25037	
							200	220	240	260	
N5120.9E00321.3		COA	290	10	240	M35	27015	27015	26015	26017	
N5124.4E00306.4		KEGIT	290	24	240	M35	27015	27015	26015	26017	
N5132.9E00230.0		SASKI	290	6	240	M35	28016	27016	27016	27019	
N5134.8E00221.5		INLOD	290	10	240	M35	27014	27014	27014	27016	
N5138.2E00206.5		SUMUM	289	20	240	M35	27014	27014	27014	27016	
N5144.9E00136.7		LOGAN	264	19	240	M35	27014	27014	27014	27016	
							100	200	310	350	
N5142.8E00105.0		TRIPO	263	5		M34	26010	25018	24030	25029	
N5142.2E00057.0		SABER	263	10		M30	26010	25018	24030	25029	
N5141.1E00041.0		BRASO	263	8		M22	26010	25018	24030	25029	
N5140.2E00028.2		D083L	263	12		M13	26008	25015	24022	26021	
N5138.8E00009.1		LAM	246	27		M02	26008	25015	24022	26021	
DESC						FL	100	150	200	310	
WIND							30007	28010	27012	28017	

N5128.7W00027.7 EGLL

TOW 60413 KG ZFW 56396 KG PL 13562 KG LAW 58585 KG



CIRRUS FLT PLAN

PAGE 6 OF 6 BA 399/27 - PLAN 1 1556 27DEC18

FF EBBUZQZX EHAAZQZX EBURZQZX EGTZQZX

EGLLBASB

(FPL-BAW399R-IS

-A320/M-SDE3FGHIRWY/LB1

-EBBR1715

-N0396F240 HELE5N HELEN UL179 COA UL608 SUMUM L608 LOGAN LOGA1H

-EGLL0042 EGSS

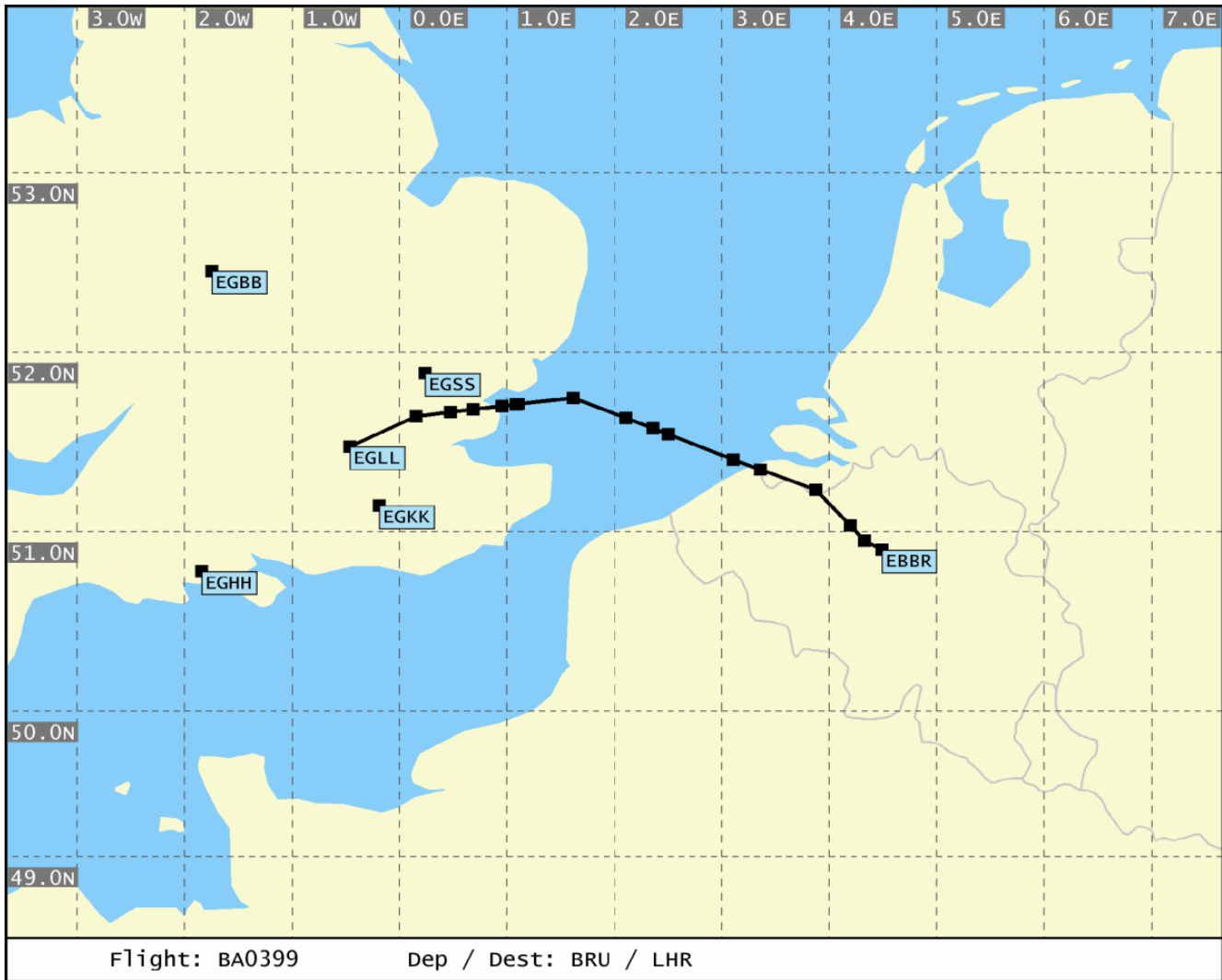
-PBN/A1B1C1D1O1S1 NAV/RNVD1E2A1 SUR/TCAS DOF/181227 REG/GEUYG

EET/EHAA0010 EBUR0013 EHAA0014 EGT0021 SEL/ASHK CODE/406091 OPR/BAW

RVR/075 RMK/TCAS LAHSO NOT AUTHORISED)

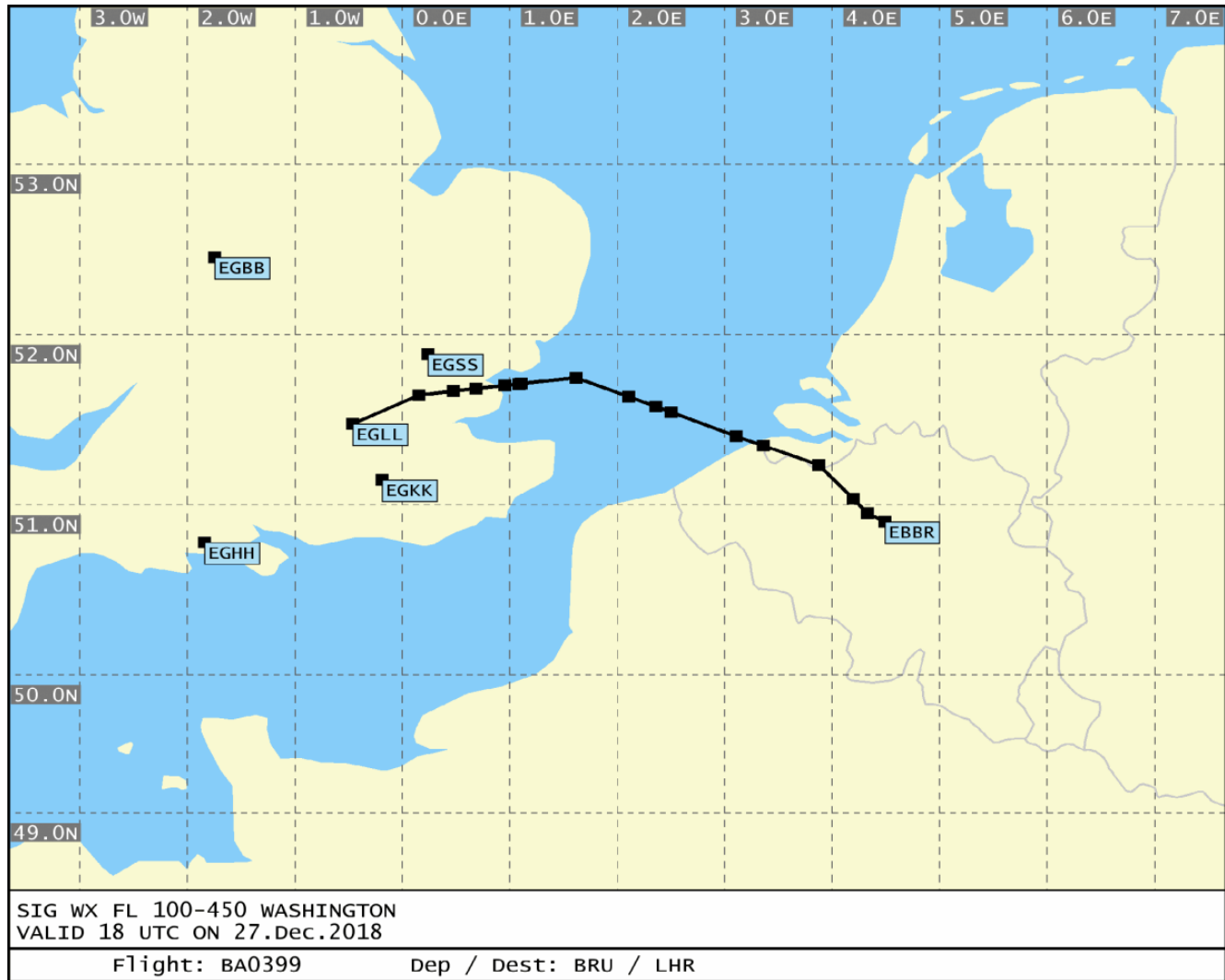


Route



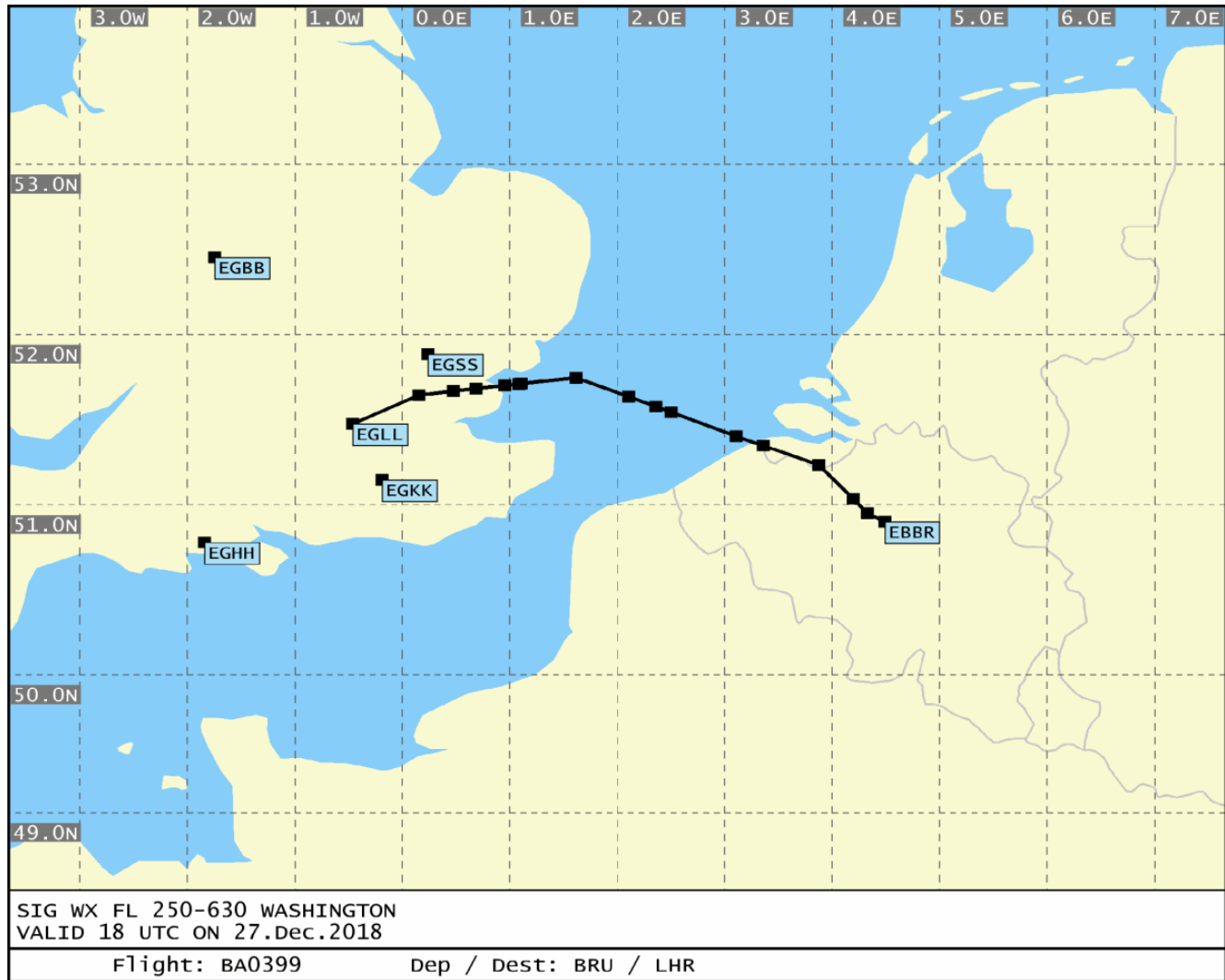


SigWx 1 of 2



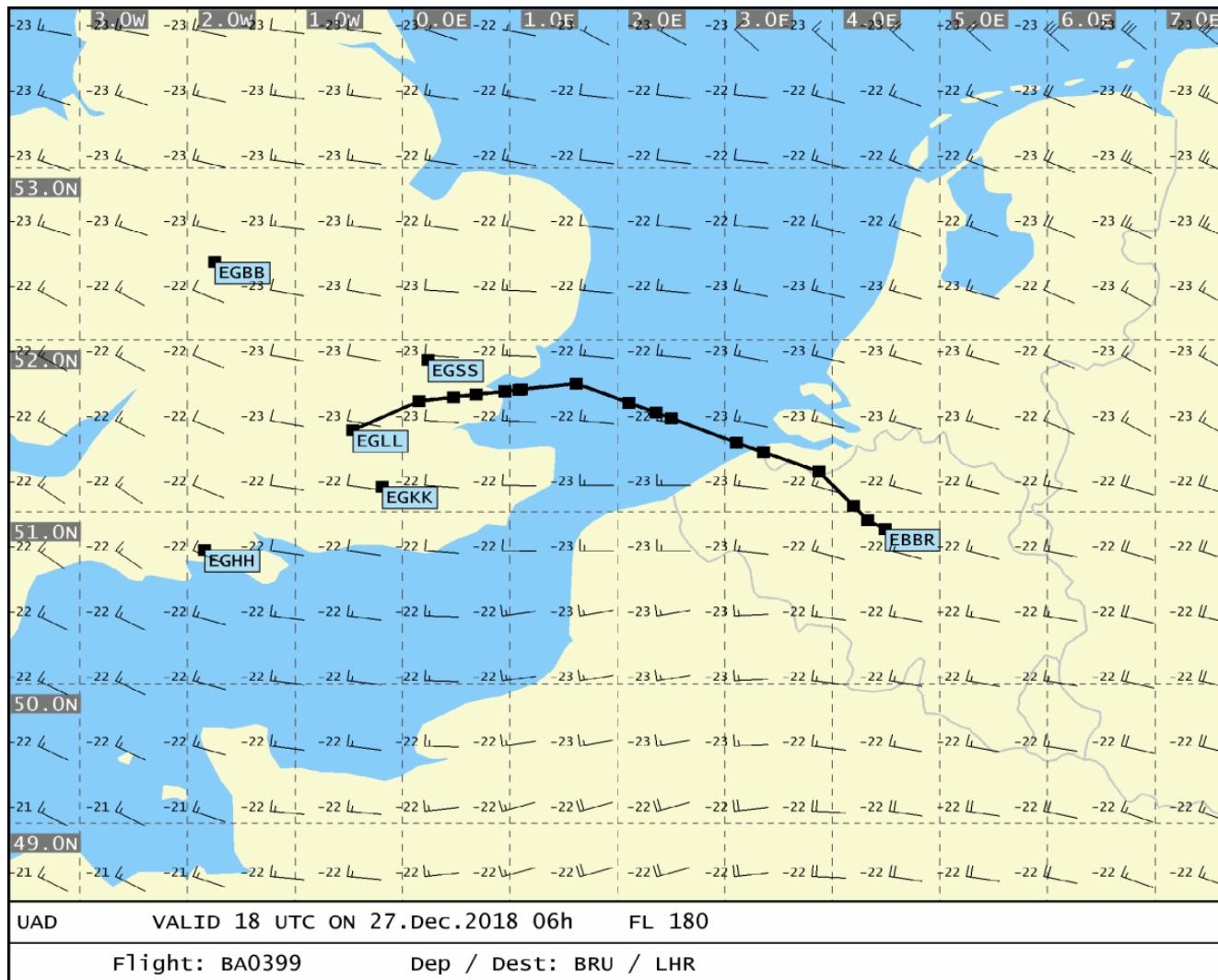


SigWx 2 of 2



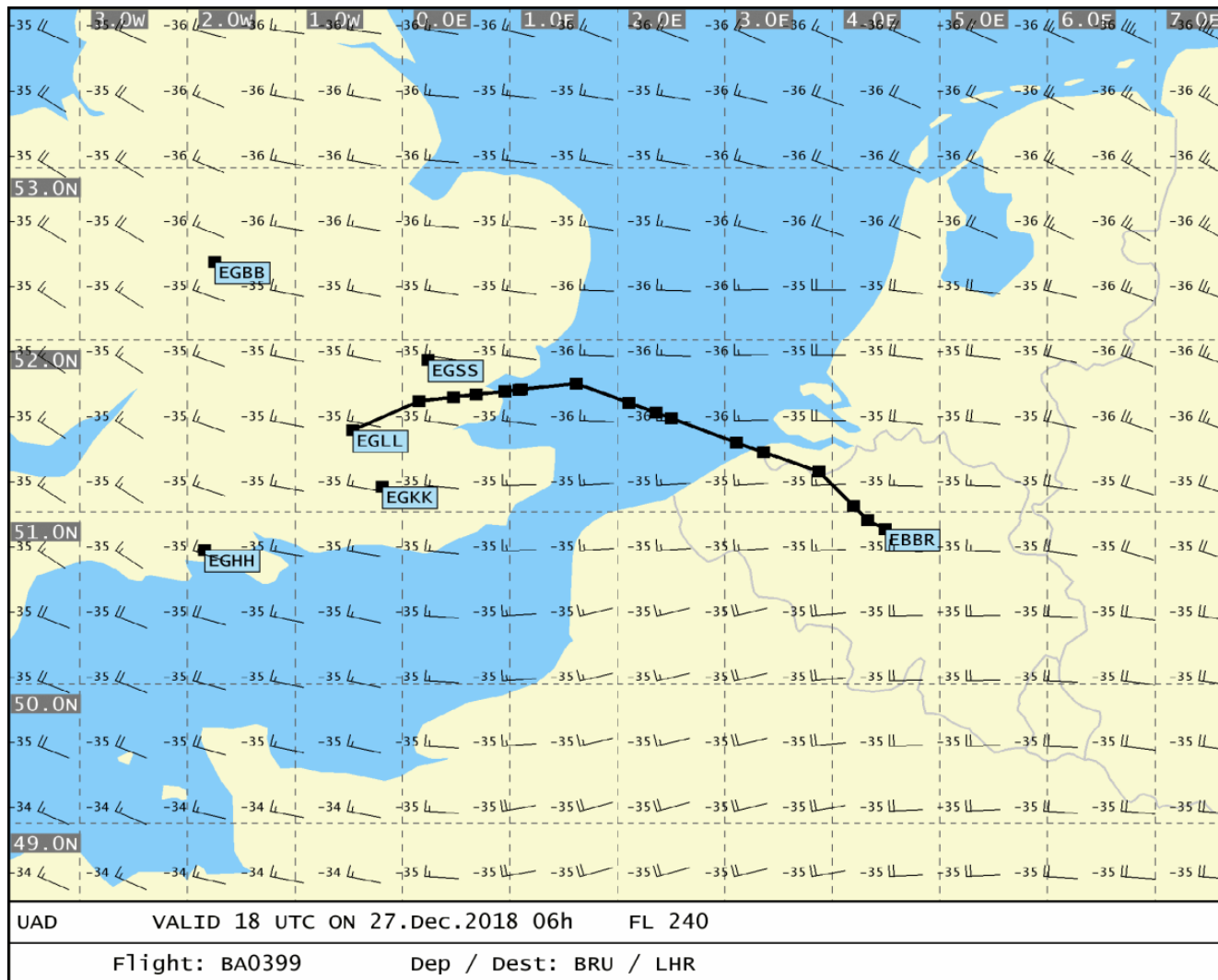


UAD 1 of 3



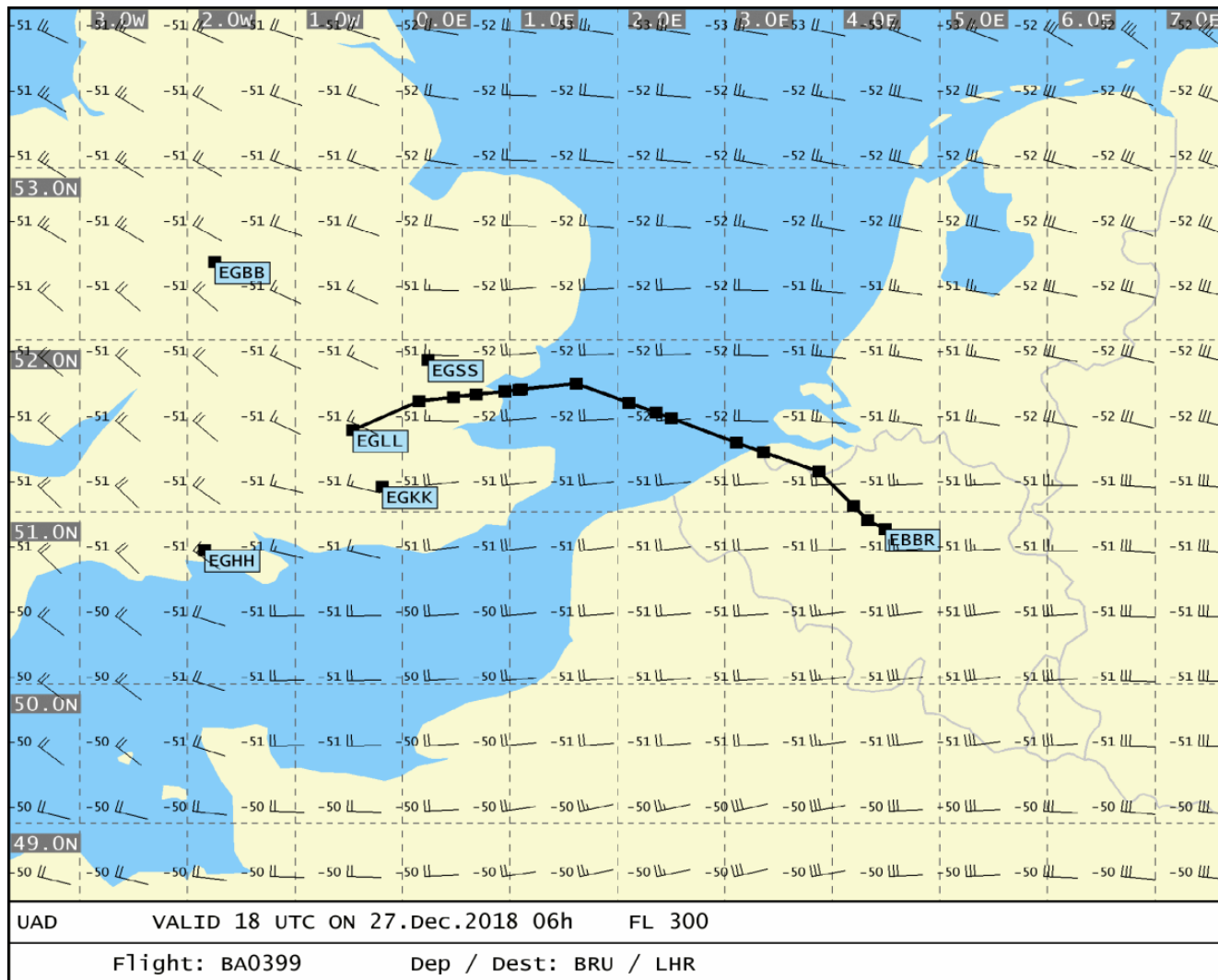


UAD 2 of 3



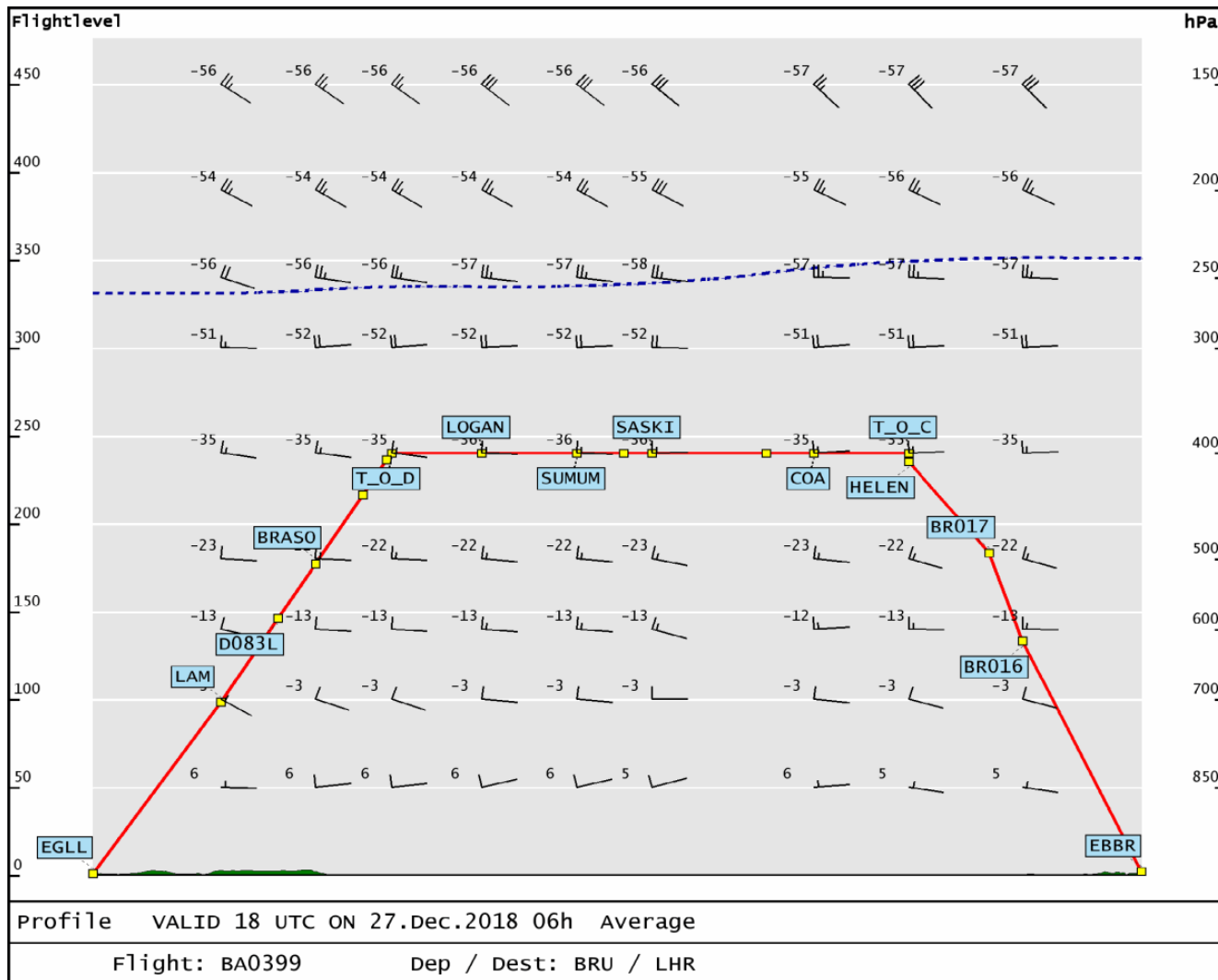


UAD 3 of 3





Vertical profile





Generated at 1556Z 27 Dec 2018
Briefing Summary

BA399
BRU - LHR
27 Dec 2018
GEUYG

CODESHARE FLIGHT NOS:

BRU - LHR ETD 1715 STAND N/A NO SLOT TIME YET ALLOCATED

===== OPDEF INFORMATION FOR GEUYG =====
NO ITEMS

===== END OPDEF INFORMATION =====
===== MET AND AIS SUMMARY FOR DEP/ARR STATIONS =====

BRUSSELS NATIONAL (BRU/EBBR)
01/2987m 19/2987m 07R/3211m 25L/3211m
07L/3638m 25R/3638m

SA271520Z 16002KT CAVOK 03/M00 Q1026 NOSIG
FT271120Z 2712/2818 VRB03KT CAVOK
PROB30
TEMPO 2802/2808 0800 FZFG FZDZ BKN002
BECMG 2808/2810 3500 BR
PROB40
TEMPO 2808/2818 1200 -DZ BKN004

- Dec 142300z-UFN
SID RNAV1 OVERLAY RWY 25L, 25R, 07L AND 07R NOT AVBL
- Dec 131809z-UFN
IAP RNAV (GNSS) RWY 07L AND 07R NOT AVBL
- Nov 161215z-Jan 151200z
REF AIP BELUX
REF CHAPTER 3.1.1.4.1
ON STAND DE-ICING ON APRON 9 IS NOT ALLOWED EXC UNCOMMON CIRCUMSTANCES.
DE-ICING ONLY ALLOWED ON REMOTE PLATFORMS.
REF CHAPTER 3.1.1.4.2
REMOTE DE-ICING PSN MIKE OFFERS ONE DE-ICING POSITION FOR ACFT UP TO ICAO CODE E.
REMOTE DE-ICING PLATFORM SOUTH IS PERFORMED ON STAND 321 FOR AIRCRAFT UP TO ICAO CODE C
- Oct 302200z-Mar 042359z
INT TWY A7, N1, N2 CL LGT U/S
- Aug 021600z-Jul 302359z
ACFT STAND 960 NEW COORDINATES PSN 505410N0042726E
- Aug 021600z-Mar 042359z
ACFT STAND 959L INSTALLED PSN 505410N0042723E
- Aug 021600z-Jul 302359z
ACFT STAND 962 NEW COORDINATES PSN 505411N0042729E
- Aug 021600z-Jul 302359z
ACFT STAND 964 NEW COORDINATES PSN 505412N0042731E
- Jul 021257z-UFN
RWY 07R SID LNO 1Y, SPI 1Y, SOPOK 1Y, PITES 1Y, ROUSY 1Y AND CIV 1Y NOT AVBL
- Jul 021247z-UFN



RWY 07L SID LNO 1W, SPI 1W, SOPOK 1W, PITES 1W, ROUSY 1W AND CIV 1W NOT AVBL

---Apr 260000z-UFN

INCREASED RISK OF WAKE VORTEX IN THE UPPER LIMIT OF AIRSPACE CLASS G DUE TO A380 OPERATIONS IN THE EBBR TMA

HEATHROW (LHR/EGLL)

09R/3660m 27L/3660m 09L/3902m 27R/3902m

SA271520Z 28002KT 4000 MIFG NSC 06/05 Q1026

FT271507Z 2715/2818 VRB03KT 4000 BR SCT022

PROB30 2717/2722 0300 FG VV///

BECMG 2811/2813 9999 NSW

PROB30 2816/2818 4000 BR

---Dec 231000z-Dec 301130z

1000-1130

UAS OPR WI 0.5NM RADIUS OF 513038N 0000923W (MAYFAIR, GREATER LONDON) MAX HGT 400FT AGL. FOR INFO 07850 058119. 2018-12-0246/AS2 F) SFC G) 500FT AMSL

---Dec 230743z-Mar 232359z

CRANE OPR PSN 513013N 0002530W (HAYES). MAX HGT 384FT AMSL/279FT AGL

---Dec 191156z-Feb 242359z

TWY ALPHA NORTH BETWEEN RUNWAY EXIT POINTS A9W AND A10E IS CLOSED DUE TO WIP. RWY 27R EXIT POINTS A9W AND A10E REMAIN AVAILABLE

---Dec 150856z-UFN

AMEND THE FOLLOWING SID ROUTING DETAILS AS FOLLOWS:

UMLAT 1F RWY 27R AND UMLAT 1G RWY 27L 2ND COLUMN IN TABLE TO READ VIA T418 TO WOBUN

ULTIB 1J RWY 09R AND ULTIB 1K RWY 09L 2ND COLUMN IN TABLE TO READ VIA T420 TO BUZAD

UK AIP AD 2-EGLL-6-4 REFERS

---Dec 120001z-Mar 112359z

REPORT OF A CRANE IN THE THAMES VALLEY AVOIDANCE AREA AND HEATHROW AVOIDANCE AREA WI 1NM RADIUS OF PSN 513535N 0002042W (HARROW, GREATER LONDON). MAX HEIGHT 157FT AGL/336FT AMSL.

18/12/014/LFTP

---Dec 100900z-Jan 081600z

0900-1600

UAS OPR WI 0.5NM RADIUS OF 513001N 0000744W (WESTMINSTER, CENTRAL LONDON). MAX HGT 400FT AGL. FOR INFO, 07702 127300. 2018-12-0151/AS5 F) SFC G) 500FT AMSL

---Dec 061150z-Mar 022359z

TWY ALPHA (NORTH) BETWEEN TWY KILO AND PLUTO UNAVAILABLE DUE TO WIP.

TWY LIMA BETWEEN TWY ALPHA (NORTH) AND BRAVO (NORTH) UNAVAILABLE

---Dec 061147z-Mar 022359z

RWY 27R/09L EXIT POINT A5 WILL BE CLOSED DUE WIP

---Dec 010001z-Feb 282359z

CRANE. CONSTRUCTION SITE CRANE OPERATING AT PSN 513119N 0001542W (ACTON, LONDON). UP TO 850FT AGL/1000FT AMSL. FOR INFO CONTACT 02036309003 OR 07974 562431. ON EXPIRY OF THIS NOTAM DETAILS WILL BE INCLUDED IN THE UK AIP ENR 5.4 2018-12-0013/AS4

---Nov 300000z-UFN

AD CRANE TO AD OBSTACLES(IN CIRCLING AREA AND AT AD)

OBST TYPE PSN ELEV FT OBST LIGHTING

TOWER CRANE 512606.76N 0003026.93W 326.40 YES

AIP AD 2.EGLL-2.10 REFERS

---Nov 260001z-Feb 252359z



CONSTRUCTION SITE CRANES OPERATING AT PSN 513146N 0001658W (PARK ROYAL, LONDON). UP TO 350FT AGL/480FT AMSL. FOR INFO CONTACT 07767 272540. ON EXPIRY OF THIS NOTAM DETAILS WILL BE INCLUDED IN THE UK AIP ENR 5.4 2018-11-0471/AS4

---Nov 211630z-Jan 052215z

NOV 21-25 28-30 DEC 01-02 05-09 12-24 26-31 JAN 01-05 1630-2215 TERMINATED SEARCHLIGHT DISPLAY AND LOW LEVEL LASER DISPLAY WI 1NM RADIUS 512845N 0001734W (ROYAL BOTANIC GARDENS, LONDON). FOR INFO 02083325000. 2018-11-0074/ AS2

F) SFC G) UNL

---Nov 150700z-Jan 311800z

0700-1800

CRANE OPR PSN 513107N 0002718W (UXBRIDGE). 4538M, 005 DEG TRUE FROM LONDON HEATHROW ARP. MAX JIB HGT 236FT AGL, 374FT AMSL

---Nov 142352z-Jan 010430z

CRANE OPR PSN 512801.1N 0002457W (HEATHROW) MAX HGT 207FT AMSL 157FT AGL

---Nov 121400z-Dec 302200z

NOV 12-14 1400-2200, NOV 15-DEC 30 1700-2200

TERMINATED GROUND LEVEL LASER DISPLAY WI 1NM 512904N 0001538W (CHISWICK, LONDON). FOR INFO 07976 238103. 2018-11-0476/AS2

F) SFC G) UNL

---Nov 102246z-Jan 312359z

LINK 41 CLOSED EAST OF STAND 431 DUE WIP

---Nov 102245z-Jan 312359z

STAND 254 CLOSED WIP

---Nov 102245z-Jan 312359z

STAND 432 CLOSED DUE WIP

---Nov 102244z-Jan 312359z

RUNWAY 27L/09R ENTRY/EXIT POINT N1 CLOSED DUE WIP

---Oct 180946z-Jan 152359z

OBSTACLE CLEARANCE SURFACES REVISED DUE TO ON-GOING CRANE OPERATIONS:

LOC/DME I-LL - RWY27L

INCREASE OCA(OCH) FOR PROCEDURE CAT A,B,C D TO 640(563)

LOC/DME I-RR - RWY 27R

INCREASE OCA(OCH) FOR PROCEDURE CAT A,B,C D TO 640(562)

---Oct 111500z-Jan 102359z

CRANE. CONSTRUCTION SITE CRANE OPERATING AT PSN 513158N 0001135W (SOUTH KILBURN, LONDON). UP TO 301FT AGL/391FT AMSL. FOR INFO CONTACT 07876 140837 OR 07824 518990. ON EXPIRY OF THIS NOTAM DETAILS WILL BE INCLUDED IN THE UK AIP ENR 5.4 2018-10-0310/AS3

---Oct 061354z-Jan 022359z

RUNWAY EXIT A9E IS NOT AVAILABLE FOR ANY TRAFFIC LANDING ON RUNWAY 09L

---Oct 060820z-Jan 021800z

CRANE OPR PSN 513015.57N 0002231.80W (SOUTHALL) MAX HEIGHT 386FT AGL / 485FT AMSL

---Sep 121508z-UFN

AERODROME OBSTACLES, IN CIRCLING AREA AND AT AERODROME. ADD OBSTACLE TYPE CRANE,

OBSTACLE POSITION 512608.15N 0003028.39W,

ELEVATION(FT AMSL) 375

OBSTRUCTION LIGHTING TYPE/COLOUR STEADY RED

AD 2.10 REFERS

=====
===== END MET AND AIS SUMMARY FOR DEP/ARR STATIONS =====

=====
===== TAKE OFF ALTERNATE =====



NO TAKE OFF ALTERNATE REQUIRED

=====
===== END TAKE OFF ALTERNATE =====
===== DESTINATION ALTERNATES =====

STANSTED (STN/EGSS)

04/3049m 22/3049m

SA271520Z AUTO 22003KT 4000 BR NCD 06/05 Q1025

FT271522Z 2715/2818 26004KT 6000 SCT020

TEMPO 2715/2717 4000 HZ

BECMG 2717/2720 9999

TEMPO 2720/2814 6000 BKN012

PROB40

TEMPO 2720/2809 2000 BR BKN005

---Dec 171200z-Mar 161200z

TAXIWAY ECHO EAST LINE CLOSED TO ALL TRAFFIC.

TAXIWAY ECHO MIDDLE LINE IS RESTRICTED TO MAXIMUM CODE E TRAFFIC.

---Nov 140001z-Feb 142359z

CRANE IN LOW FLYING AREA THAMES VALLEY AVOIDANCE AREA WI 1NM RADIUS OF PSN 514601N 000125W (HATFIELD, HERTFORDSHIRE) MAX

HEIGHT 190FT AGL/452FT AMSL. 18/11/021/LFTP

---Nov 110830z-Feb 110830z

RED OBST LIGHT U/S ON THE DIAMOND HANGAR HELICOPTER VRP

---Nov 061110z-Dec 311800z

CRANES OPR AT PSN 515336N 0001601E (066 DEG MAG 2381M FM STANSTED

ARP). MAX OPR HGT 30M/98FT AGL 136M/446FT AMSL. JIBS LIT WITH RED OBS LGT.

GATWICK (LGW/EGKK)

08R/3316m 26L/3316m 08L/2565m 26R/2565m

SA271520Z VRB02KT CAVOK 07/04 Q1025

FT271058Z 2712/2818 VRB03KT 7000 NSC

BECMG 2712/2715 CAVOK

TEMPO 2716/2722 3000 BR

BECMG 2718/2722 BKN020

PROB30 2718/2722 0300 FG VV///

PROB40

TEMPO 2722/2810 2000 BR MIFG

---Dec 261811z-Dec 272359z

AD OPEN. RISK OF INCREASED DRONE ACTIVITY. MITIGATION IN PLACE.

---Dec 191300z-Feb 191800z

ACFT STANDS 16 AND 18 CLSD DUE WIP.

---Dec 191300z-Feb 191800z

TWY J CLSD ABEAM STANDS 16 AND 18 DUE WIP

---Dec 191135z-Feb 281800z

TWY UNIFORM CENTRELINE RE-ROUTED 10M TO THE EAST FM ABEAM STAND

231.GREEN LIT CENTRELINE REPLACED WITH REFLECTIVE STUDS DUE WIP

---Dec 191135z-Feb 281800z

TWY UNIFORM DOWNGRADED TO MAXIMUM ACFT SIZE CODE E. STANDS 234 AND

235 AVAILABLE FOR TOWED CODE F ACFT WITH 30 MINUTES NOTICE

---Dec 190001z-Mar 100530z

NEW RWY 08L/26R HOLDING POINT AT EASTERN END OF TWY Z DESIGNATED Z1

---Dec 060000z-UFN

AMEND STANDARD ARRIVAL CHART:

ON THE TEBRA 1G: AMEND THE 'VIA' COLUMN TO READ Y4, Q63, L610: AMEND



THE FIRST ROW OF THE LEVELS COLUMN TO READ ODOB/BLIXY/SUNUP FL220.
THE LEVELS FOR ABTUM AND TIMBA ARE UNCHANGED.
AD 2-EGKK-7-1 REFERS.

---Oct 012100z-Jan 012100z

TWY J EAST OF TWY N AND TWY Z EAST OF TWY N IS NOT AVBL FOR ACFT
ABOVE CODE C DUE WIP

---Sep 250744z-UFN

LOCAL TRAFFIC REGULATIONS (GROUND MOVEMENT)

REPLACE PARAGRAPHS D AND E WITH THE FOLLOWING:

(D) GROUND MOVEMENT OF LARGE AIRCRAFT - CODE E (WINGSPAN BETWEEN 52M
LESS THAN 65M)

THE FOLLOWING RESTRICTIONS APPLY:

(1) TAXIWAY JULIET, EAST OF TAXIWAY NOVEMBER IS NOT AVAILABLE FOR
CODE E AIRCRAFT

(2) TAXIWAY ZULU IS NOT AVAILABLE FOR CODE E AIRCRAFT

(3) TAXIWAY LIMA, BETWEEN TAXIWAYS ROMEO AND SIERRA IS A CODE E
TAXILANE.

(4) TAXIWAY LIMA BEYOND STAND 36 IS NOT AVAILABLE FOR CODE E AIRCRAFT
WITH A WINGSPAN IN EXCESS OF 61M

(5) TAXIWAY YANKEE FROM WHISKEY 1 HOLD TO ABEAM THE WIND DIRECTION
INDICATOR IS NOT AVAILABLE FOR CODE E AIRCRAFT WITH A WINGSPAN IN
EXCESS OF 61M.

E) GROUND MOVEMENT OF LARGE AIRCRAFT - CODE F (WINGSPAN BETWEEN 65M
LESS THAN 80M)

(I) A380 AIRCRAFT - TAXIWAY ROUTES AVAILABLE TO A380 ARE SHOWN ON
AERODROME CHART AD 2-EGKK-2-5, MARKED IN YELLOW. THERE IS A POSITIVE
BUT SUBSTANDARD OBSTACLE CLEARANCE (MINIMUM OF 47.5 M) ON TAXIWAY
JULIET A380 ROUTING. PILOTS ARE TO ENSURE THAT COCKPIT OVER
CENTRE-LINE (COCL) TECHNIQUE IS USED AT ALL TIMES WHEN MANOEUVRING AT
GATWICK.

AIP AD 2.EGKK-2.20 PARAGRAPH 2 REFERS

---Sep 181020z-UFN

LONDON/GATWICK AERODROME OBSTACLES - IN CIRCLING AREA AND AT
AERODROME TABLE ADD

COLUMN 1 OBSTACLE ID/DESIGNATION = NIL

COLUMN 2 OBSTACLE TYPE = CRANE

COLUMN 3 OBSTACLE POSITION = 510659.96N 0001051.18W

COLUMN 4 ELEVATION/HEIGHT = 358FT

COLUMN 5 OBSTRUCTION LIGHTING TYPE/COLOUR = YES

COLUMN 6 REMARKS = ESTIMATED DISESTABLISHMENT JUNE 2019

UK AIP AD 2.10 REFERS

BOURNEMOUTH (BOH/EGHH)

08/2271m 26/2271m

SA271520Z VRB02KT CAVOK 07/04 Q1025

FT271400Z 2715/2724 VRB03KT 9999 FEW030

TEMPO 2715/2717 6000

BECMG 2717/2721 3000 BR MIFG

PROB30 2717/2724 0200 FG VV///

---Dec 110000z-Mar 102359z

ILS GP RWY 26 INSUFFICIENT FLY-UP INDICATION AT 6NM 8 DEGREES RIGHT
OF CENTRE LINE

---Nov 120630z-Feb 122130z

0630-0800 2030-2130

BOURNEMOUTH RADAR SERVICE NOT AVAILABLE



BIRMINGHAM (BHX/EGBB)
33/3052m 15/3052m
SA271520Z 00000KT 9999 FEW019 OVC034 09/07 Q1025
FT271103Z 2712/2812 22004KT 6000 BKN030
TEMPO 2712/2716 9999
TEMPO 2716/2808 3000 BR
BECMG 2808/2811 9999

---Dec 181321z-UFN
ATC CLEARANCES MAY BE OBTAINED BY VOICE RTF OR DATALINK DEPARTURE
CLEARANCE SERVICE (DCL). DATALINK CLEARANCE MAY BE REQUESTED AT ANY
TIME, BUT WILL NOT BE AVAILABLE EARLIER THAN EOBT -15 MINUTES.

---Dec 130913z-Mar 130900z
METAL PLATE ON TWY DELTA AT HOLD DELTA 5.

---Nov 102000z-Jan 052145z
TERMINATED HORIZONTAL LASER DISPLAY WI 1NM 523018N 0015119W
(NECHELLS, BIRMINGHAM). FOR INFO 07818 517852. 2018-11-0517/AS2 F)
SFC G) UNL

---Nov 051312z-Jan 042359z
RWY 15 HIGH INTENCITY ALS. 750M APPROACH BAR PORT SIDE HAS FIVE
LIGHTS U/S (30 PERCENT). USABLE PATTERN AVAILABLE.

---Oct 111105z-Dec 302359z
CRANES. CONSTRUCTION SITE CRANES OPERATING WI 0.5NM
522851N 0015405W (BIRMINGHAM CITY CENTRE). UP TO 517FT AGL/978FT
AMSL. FOR INFO CONTACT 01604 622865. ON EXPIRY OF THIS NOTAM DETAILS
WILL BE INCLUDED IN THE UK AIP ENR 5.4 2018-10-0009/AS3

=====
END DESTINATION ALTERNATES
=====
ENROUTE FUEL ALTERNATE
=====

NO ENROUTE FUEL ALTERNATE REQUIRED

=====
END ENROUTE FUEL ALTERNATE
=====
ETOPS ALTERNATES
=====

NO ETOPS ALTERNATES REQUIRED

=====
END ETOPS ALTERNATES
=====
ENROUTE AIRSPACES
=====

BRUSSELS FIR (EBBU)
NO RECENT SIGMET

---Dec 240730z-Jan 020700z
CONDITIONAL ROUTE SEGMENTS CDR2 RECLASSIFIED AS CDR1:
UL179 NIK-SORAT FL195/FL660
UM150 KOK-PITES FL195/FL660
UM170 KUDIN-LNO FL195/FL660
UN852 LUTOM-TERLA FL195/FL660
UQ624 ROUSY-BUB FL245/FL660
UY131 NIK-NILEM FL195/FL660
UY157 MOKOM-REMGO FL245/FL660
UY873 BELOB-DENUT FL195/FL660
UZ703 BABIX-CIV FL245/FL660
UZ706 ARDEN-LEND0 FL195/FL660
UZ707 ULPEN-FAMEN FL245/FL660
UZ709 RUPIN-CIV FL245/FL660



DCT SOGRI-DELOM FL195/FL245
DCT NETEX-DELOM FL195/FL245
DCT NETEX-FAMEN FL195/FL660
DCT SORAT-NIK FL195/FL245
DCT KOK-SUTAL FL195/FL245
DCT WOODY-SUTAL FL195/FL245
DCT SUTAL-HELEN FL195/FL245
---Dec 240730z-Jan 020700z
CONDITIONAL ROUTE SEGMENTS CDR2 RECLASSIFIED AS CDR1:
L179 NIK-SORAT FL045/FL195
M624 REMBA-DIK FL145/FL195
T853 ARCKY-IBESA FL105/FL175
Z311 BEKEM-NIK FL105/FL195
Z907 ARCKY-KOGES FL105/FL175
DCT NETEX-DELOM FL115/FL195
DCT NETEX-FAMEN FL115/FL195
---Dec 221300z-Jan 011600z
DAILY 1300-1600
HTA10-COASTAL HELICOPTER TRAINING AREA ACT
F) GND G) 2000FT AMSL
---Dec 220830z-Jan 011600z
DAILY 0830-1600
HTA01-ARDENNES 01 AREA ACT
F) GND G) 250FT AGL
---Dec 211956z-UFN
SOIGNIES PSN 503542N0040423E TO 503552N0040415E, HEIGHT 400FT AGL
OBST LGT U/S ON WIND TURBINE 1 AND 2
---Dec 211200z-Jan 020730z
BELGA RADAR CLSD
---Dec 211145z-UFN
ATS ROUTE L745 CLSD
---Dec 211140z-UFN
ATS ROUTE UL745 CLSD
---Dec 200835z-UFN
BEAUVECHAIN TACAN BBE CH107X MIGHT PRESENT AZIMUTH UNLOCKS IN SECTOR
094-096 104-110 128-130 169-171 192-196 DEGREES.
NO OPERATIONAL LIMITATION.
PILOTS ARE REQUESTED TO REPORT ANY ABNORMALITY TO ATC
---Dec 191515z-UFN
WUUSTWEZEL PSN 512235N0043908E OBST LGT U/S ON WIND TURBINE 1 AND PSN
512251N0043927E OBST LGT U/S ON WIND TURBINE 2. HGT 180M AGL FOR
BOTH.
---Dec 180757z-UFN
DINANT PSN 501816N0045826E ALL DAY OBST LIGHTS ON WINDTURBINE
1 AND 3 AND 1 DAY OBST LIGHT ON WINDTURBINE 5 U/S.
98M AGL/407M AMSL
---Dec 180753z-UFN
BERLOZ PSN 504150N0051115E OBST LIGHTS ON WINDTURBINES
1, 6 AND 10 U/S. 147M AGL/281M AMSL
---Dec 180744z-UFN
CINEY PSN 501658N0050254E DAY OBST LIGHTS ON WINDTURBINE 5 U/S. 148M
AGL/433M AMSL
---Dec 180120z-UFN
TIHANGE-2 PSN 503157N0051633E OBST LGT ON NUCLEAR POWER PLANT
REFRIGERATION TOWER U/S.
HGT 159M
---Dec 060000z-UFN



REF ENR 2.1 AND ENR 6-INDEX.07, EFFECTIVE DATE 06 DEC 2018.
MAASTRICHT UAC LUX UPPER SECTOR READ FREQ AS 132.315, MAASTRICHT UAC
OLNO UPPER SECTOR READ FREQ AS 125.980. AIP WILL BE AMENDED
ACCORDINGLY

- Dec 050810z-UFN
RCC BRUSSELS OPS LIMITED DUE TO RADIO COVERAGE LIMITATIONS
- Dec 030854z-UFN
GENK 505645N0053031E OBST LGT ON TRANSMISSION MAST U/S
HEIGHT 218M AGL
- Dec 030848z-UFN
VELTEM PSN 505327N0043710E OBST LGT ON MAST U/S
HGT 100M AGL
- Nov 191040z-UFN
INCREASED CPDLC USAGE ENDEAVOURED BY ATC AT MAASTRICHT UAC TO IMPROVE
COM SAFETY AND ATM CAPACITY
ALL DATALINK ACFT (ATN WHITE LISTED AND FANS1/A) ARE REQUESTED
TO LOG ON TO EDYY
REF EU DATA LINK SERVICE IMPLEMENTING RULE 29/2009
ACFT NOT LOGGING ON ARE CREATING EXTRA CONTROLLER WORKLOAD

LONDON FIR/UIR (EGTT)
NO RECENT SIGMET

- Dec 271247z-Jan 272359z
AIR NAV OBST LGT UK18607673F TURB-OFF 08A SINGLE U/S.
PSN 543829.26N 0010418.30W, ELEV 433FT
- Dec 271235z-Jan 272359z
AIR NAV OBST LGT UK0229A011F RTM LFA 2 SINGLE U/S.
PSN 503300.84N 0040029.87W. ELEV 2317FT / HGT 640FT
- Dec 271213z-Jan 272359z
AIR NAV OBST LGT UK0171A146F RTM CW05 MOEL-Y-PARC SINGLE U/S.
PSN 531315.84N 0031852.00W, ELEV 1893FT / HGT 785FT
- Dec 271200z-Dec 271800z
DANGER AREA EG D509 CAMPBELTOWN ACTIVATED
F) SFC G) 16000FT AMSL
- Dec 260000z-Dec 310430z
0000-0030 0230-0430
THE FLIGHT INFORMATION SERVICE PROVIDED BY THE LONDON ACC ON FREQ
124.600 MHZ, 124.750 MHZ AND 125.475 MHZ WILL NOT BE AVAILABLE.
PILOTS REQUESTING FLIGHT INFORMATION DURING THIS PERIOD MAY CONTACT
LONDON CONTROL ON THE NOTIFIED H24 FREQUENCIES IN THE AIP PAGE ENR
2.1
- Dec 241416z-UFN
ADDITION OF AEROTOWING TO UPAVON AERODROME AS FOLLOWS:
PAGE 12 - UPAVON
UNDER SECTION 1 OF UPAVON AIRFIELD, PLEASE CHANGE (W) TO (W AND T),
TO REFLECT THE FACT THAT AEROTOWING TAKES PLACE IN ADDITION TO WINCH
LAUNCHING.
ENR 5.5-12 REFERS
F) SFC G) 3600FT AMSL
- Dec 240900z-Jan 041500z
DANGER AREA EG D307 DONNA NOOK DEACTIVATED
F) SFC G) 20000FT AMSL
- Dec 220800z-Dec 281700z
0800-1700
PIPELINE INSPECTION NOTIFICATION PROCEDURE SYSTEM (PINS) WILL TAKE



PLACE IN THE FOLLOWING LOW FLYING AREA(S) 1, 2, 4, 7N, 8, 9, 18, 19,
THAMES VALLEY AVOIDANCE AREA
UK AIP ENR 6-1-10-3 REFERS 18/12/057/LFBC
F) SFC G) 2000FT AGL

- Dec 212300z-Jan 070700z
SWANWICK MIL ARE UNABLE TO PROVIDE ROUTINE AIR TRAFFIC SERVICES TO
MILITARY OR CIVIL AIRCRAFT. CIVIL TRAFFIC ARE TO FILE TO JOIN AND
REMAIN WITHIN CONTROLLED AIRSPACE. THIS DOES NOT APPLY TO AIRCRAFT IN
SUPPORT OF NATIONAL SECURITY, AIRCRAFT DECLARING AN EMERGENCY OR
OPERATIONAL SORTIES THAT SWANWICK MIL ARE ALREADY AWARE OF.
- Dec 211700z-Jan 020730z
WARTON LOWER AIRSPACE RADAR SERVICE NOT AVBL
- Dec 211700z-Jan 020730z
WARTON ADVISORY RADIO AREA SERVICE NOT AVBL
- Dec 211700z-Jan 070800z
LEEMING LOWER AIRSPACE RADAR SERVICE NOT AVAILABLE
- Dec 211700z-Jan 071700z
CONINGSBY LOWER AIRSPACE RADAR SERVICE UNAVAILABLE.
- Dec 211700z-Jan 070900z
BRIZE NORTON LOWER AIRSPACE RADAR SERVICE MAY BE UNAVAILABLE AT SHORT
NOTICE DUE TO CONTROLLER MANNING. PILOTS WISHING TO MONITER THE
FREQUENCY SHOULD SQUAWK 3727.
- Dec 211700z-Jan 041700z
ATS ROUTE Y124 AND UY124 AVBL H24. 2018-12-0233/AS5
- Dec 211323z-UFN
AYLESBURY/THAME GLIDER SITE, BUCKS (AD) (W) 514633N 0005625W CLOSED
AD NOT AVBL TO ACFT, WINCH LAUNCH OR TOWING
F) SFC G) 2000FT AMSL
- Dec 211300z-Jan 070845z
SHAWBURY LOWER AIRSPACE RADAR SERVICE UNAVAILABLE
- Dec 211200z-Jan 070800z
DANGER AREA CROSSING SERVICE NOT AVBL FOR EG D126 AND
EG D128. SALISBURY OPS CLOSED. DANGERS AREAS REMAIN ACTIVE
THROUGHOUT. DANGER AREA ACTIVITY INFORMATION SERVICE AVAILABLE ON
130.150MHZ OR TEL: 01980 674739
F) SFC G) 1400FT AMSL
- Dec 211200z-Jan 070800z
DANGER AREA EG D123 AND EG D125 UPPER LIMIT REDUCED TO 3000FT BETWEEN
0615-2359
DANGER AREA CROSSING SERVICE NOT AVBL DUE SALISBURY OPS CLOSED.
DANGERS AREAS REMAIN ACTIVE THROUGHOUT. DANGER AREA ACTIVITY
INFORMATION SERVICE AVAILABLE ON 130.150MHZ OR TEL: 01980 674739. F)
SFC G) 3000FT AMSL
- Dec 211200z-Jan 070800z
WADDINGTON LOWER AIRSPACE RADAR SERVICE UNAVAIALABLE
- Dec 211143z-UFN
8.33 KHZ CHANGES. PLANNED TRANSITION OF FREQUENCY ASSIGNMENTS TO 8.33
KHZ SPACING IS DETAILED IN AIP SUP 069/2018. PILOTS ARE TO NOTE THAT
OTHER AIC SOURCES OF INFORMATION REGARDING RADIO CHANNELS MAY BE OUT
OF DATE DURING 2018 AND AIRSPACE USERS ARE ADVISED TO REFER TO THIS
SUPPLEMENT FOR LATEST INFORMATION). AR-2018-12-0007-AS6
- Dec 210900z-Jan 070900z
DANGER AREA EG D118 PEMBREY DEACTIVATED
F) SFC G) 12000FT AMSL
- Dec 210830z-Jan 070930z
YEOVILTON LOWER AIRSPACE RADAR SERVICE UNAVAILABLE.
- Dec 210800z-Jan 070800z



LINTON-ON-OUSE LOWER AIRSPACE RADAR SERVICE UNAVAILABLE.
 ---Dec 201800z-Jan 070930z
 VALLEY LOWER AIRSPACE RADAR SERVICE NOT AVBL
 ---Dec 201700z-Jan 070830z
 RESTRICTED AREA EG R313 SCAMPTON DEACTIVATED 2018-12-0243/AS2
 F) SFC G) 9500FT AMSL
 ---Dec 201300z-Jan 070800z
 THE FOLLOWING DANGER AREAS ARE DEACTIVATED:
 EG D003 PLYMOUTH
 EG D004 PLYMOUTH
 EG D006A FALMOUTH BAY
 EG D007 FOWEY INNER
 EG D007A FOWEY
 EG D007B FOWEY
 EG D008 PLYMOUTH
 EG D008A PLYMOUTH
 EG D008B PLYMOUTH
 EG D009A WEMBURY
 EG D012 LYME BAY NORTH
 EG D013 LYME BAY
 EG D014 PORTLAND
 EG D017 PORTLAND
 EG D021 PORTLAND
 EG D023 PORTLAND
 EG D026 LULWORTH
 EG D031 PORTLAND
 EG D036 PORTSMOUTH
 EG D037 PORTSMOUTH
 EG D038 PORTSMOUTH
 EG D039 PORTSMOUTH
 EG D040 PORTSMOUTH
 F) SFC G) 60000FT AMSL
 ---Dec 201200z-Jan 081200z
 CULDROSE LOWER AIRSPACE RADAR SERVICE UNAVAILABLE
 ---Dec 201200z-Jan 041400z
 PLYMOUTH MILITARY EAST AND WEST LOWER AIRSPACE RADAR SERVICE
 UNAVAILABLE
 ---Dec 191730z-Jan 071200z
 BOSCOMBE DOWN LOWER AIRSPACE RADAR SERVICE CLOSED.
 ---Dec 191642z-UFN
 NAVIGATION WARNINGS, PROHIBITED, RESTRICTED AND DANGER AREAS DANGER
 AREA EG D129 WESTON ON THE GREEN ADD REMARK
 PARACHUTING ACTIVITY UP TO FL135 MAY BE CONDUCTED WITH LONDON CONTROL
 (SWANWICK) PERMISSION. REGULAR ACTIVITY SR-SS TO FL85 DESCRIBED IN
 ENR 5.5.
 AERIAL SPORTING AND RECREATIONAL ACTIVITIES
 WESTON ON THE GREEN, OXFORD, AMEND REMARKS TO READ
 ACTIVITY NOTIFIED ON THE DAY TO BRIZE NORTON ATC. DROPS ARE MADE IN
 EG D129 WESTON ON THE GREEN SEE ENR 5.1. DROPS MAY BE MADE FROM UP TO
 FL135 WITH LONDON CONTROL (SWANWICK) PERMISSION.
 ALTERNATIVE CONTACT: 133.650 MHZ.
 NORMALLY DURING DAYLIGHT HOURS. NIGHT PARACHUTING FREQUENT
 ENR 5-1 AND ENR 5.5-6 REFER
 F) SFC G) FL135
 ---Dec 132026z-Jan 132359z
 AIR NAV OBST LGT UK0230A117F RTM ES08 MANNINGTREE BBC SINGLE U/S. PSN
 515526.07N 0010509.77E, ELEV 624FT/HGT 519FT



- Dec 132003z-Jan 132359z
AIR NAV OBST LGT UK0230V484F RTM BROOKMANS PARK SINGLE U/S.
PSN 514342.01N 0001036.37W, ELEV 912FT/HGT 502FT
- Dec 130917z-Dec 272359z
TRIGGER NOTAM - TRANSITION OF FREQUENCY ASSIGNMENTS TO 8.33KHZ VOICE
CHANNEL SPACING
SUP 069/18 REFERS
- Dec 121039z-UFN
RNAV ROUTE CHANGED
AMEND M197 ROUTE REMARKS TO READ:
GAPLI - CPT
(I) FL 285 TO FL 345:
CDR 1 FRI 1700 (1600) - MON 0900 (0800), TUE-FRI 0000-0900 (MON-THU
2300-0800), PH H24.
CDR 3 AT ALL OTHER TIMES.
(II) ABOVE FL 345:
CDR 1 H24.
REST OF M197 - PERM.
UK AIP ENR 3.3 (06 DEC 18) REFERS
- Dec 120800z-Mar 091830z
UNMANNED CAPTIVE BALLOON IN LOW FLYING AREA 17
WI 1NM RADIUS OF PSN 540706N 0031432W (BARROW-IN-FURNESS, CUMBRIA)
MAX HEIGHT 200FT AGL. 18/12/008/LFTP
F) SFC G) 500FT AMSL
- Dec 100900z-Mar 082200z
0900-2200
UNMANNED CAPTIVE BALLOON IN LOW FLYING AREA 8 AND THE BIRMINGHAM
AVIODANCE AREA WI 1NM RADIUS OF PSN 523629N 0014035W (TAMWORTH,
STAFFORDSHIRE) MAX HEIGHT 200FT AGL. 18/12/009/LFTP
F) SFC G) 600FT AMSL
- Dec 100800z-Mar 101600z
0800-1600
UAS OPR EXTENDED VISUAL LINE OF SIGHT OPR WI 1NM RADIUS OF 510758N
0005502E (ASHFORD, KENT) MAX HGT 400FT AGL. FOR INFO 07508 126237.
2018-12-0115/AS2
F) SFC G) 600FT AMSL
- Dec 100700z-Jan 311630z
DEC 10-31 0700-1600, JAN 01-31 0700-1630
UNMANNED CAPTIVE BALLOON IN LOW FLYING AREA 8 AND THE
LIVERPOOL/MANCHESTER AVOIDANCE AREA WI 1NM RADIUS OF PSN
533755N 0025814W (SOUTHPORT, MERSEYSIDE) MAX HEIGHT 200FT AGL.
18/12/010/LFTP
F) SFC G) 300FT AMSL
- Dec 091200z-Feb 281737z
1200-SS
KITE FLYING WI 0.25NM RADIUS 522112N 0000555E (HADDENHAM,
CAMBRIDGESHIRE). MAX HGT 1000FT AGL. FOR INFO 07710802009.
2018-09-0206/AS2
F) SFC G) 1100FT AMSL
- Dec 050900z-Feb 021200z
0001-1200
SEARCHLIGHT DISPLAY WI 1NM RADIUS 512514N 0020741W (LACOCK, VCY
CHIPPENHAM, WILTSHIRE). FOR INFO 01249 730204. 2018-12-0123/ AS2 F)
SFC G) UNL
- Dec 031145z-Dec 311600z
SR-SS
FLYING OF LARGE MODEL ACFT WI 0.5NM RADIUS 514259N 0001541W (E OF



LONDON COLNEY, HERTFORDSHIRE). FOR INFO 07710 924721.
2018-01-0059/AS5.

F) SFC G) 2000FT AMSL

---Dec 031145z-Mar 031743z

SR-SS

FLYING OF LARGE MODEL ACFT WI 0.5NM RADIUS OF 532533N 0002754W
(NORTON SANDHAYS FARM, NEAR BISHOP NORTON, LINCOLNSHIRE). FOR INFO,
07484 248473. 2018-04-0114/AS5.

F) SFC G) 1600FT AMSL

---Dec 031145z-Dec 311559z

SR-SS

FLYING OF LARGE MODEL ACFT WI 0.5NM RADIUS 515905N 0000955W (E OF
BALDOCK, HERTFORDSHIRE). FOR INFO, 07710 924721. 2018-01-0060/AS5. F)

SFC G) 2000FT AMSL

---Dec 031130z-Dec 311549z

SR-SS

FLYING OF LARGE MODEL ACFT WI 1NM RADIUS 525523N 0005743E (BINHAM,
NORFOLK). FOR INFO 07710 924721. 2018-01-0055/AS5.

F) SFC G) 1700FT AMSL

---Dec 011200z-Mar 011824z

1200-SS PLUS30

KITE FLYING 0.5NM RADIUS 503708N 0032151W (E OF EXMOUTH, DEVON). FOR
INFO 07843 098727 / 01395 279443. 2018-12-0077/AS 5.

F) SFC G) 1400FT AMSL

---Dec 011000z-Jan 281300z

1000-1300

KITE FLYING WI 0.25NM RADIUS 535829N 0013100W (HARROGATE, NORTH
YORKSHIRE). MAX HGT 800FT AGL. FOR INFO 07768690458. 2018-09-0271/AS2

F) SFC G) 1100FT AMSL

---Dec 010800z-Jan 311652z

SR-SS

UNMANNED CAPTIVE BALLOON IN LOW FLYING AREA 8 AND 9 WI 1NM RADIUS OF
PSN 530434N 0022625W (CREWE, CHESHIRE) MAX HEIGHT 200FT

AGL. 18/11/048/LFTP

F) SFC G) 382FT AMSL

---Dec 010752z-Dec 311557z

SR-SS

FLYING OF LARGE MODEL ACFT WI 1NM RADIUS OF 524650N 0004242W
(SEWSTERN, LEICESTERSHIRE). FOR INFO, 07778 287350. 2017-09-0454/AS5.

F) SFC G) 2000FT AMSL

---Dec 010749z-Dec 311611z

SR-SS

FLYING OF LARGE MODEL ACFT WI 0.5NM RADIUS 505525N 0020113W
(CASHMOOR, DORSET). FOR INFO, 07909 022800. 2018-01-0047/AS5.

F) SFC G) 1900FT AMSL

---Dec 010748z-Dec 311556z

SR-SS

FLYING OF LARGE MODEL ACFT WI 0.5NM RADIUS 522407N 0000619W (WARBOYS,
CAMBRIDGESHIRE). FOR INFO, 01487 815358. 2017-12-0020/AS5. F) SFC G)

1600FT AMSL

---Dec 010001z-Jan 022359z

FLYING OF LARGE MODEL ACFT WI 0.5NM RADIUS OF 533938N 0003306W
(WINTERTON, NORTH LINCOLNSHIRE). FOR INFO, 01482 506811.

2017-09-0465/AS5.

F) SFC G) 1600FT AMSL

---Nov 291440z-Jan 302359z

GAS VENTING WILL TAKE PLACE IN LOW FLYING AREA 5 AND NIGHT SECTOR 5A



WI 1NM RADIUS OF PSN 524355N 0002408E (KINGS LYNN, NORFOLK) MAX
HEIGHT 1000FT AGL. 18/11/046/LFTP
F) SFC G) 1075FT AMSL
---Nov 240748z-Dec 311556z
SR-SS
FLYING OF LARGE MODEL ACFT WI 1NM RADIUS OF 533251N 0014226W (SE OF
HOLMFIRTH, W YORKSHIRE). FOR INFO, 07973 755472. 2018-01-0056/AS5. F)
SFC G) 2700FT AMSL
---Nov 210944z-UFN
AIC Y009/2018 ROYAL HELICOPTER FLIGHTS. AIC CANCELLED
---Nov 210729z-Feb 211730z
MON-FRI SR-SS
OCNL CAPTIVE UNMANNED HELIUM BALLOON FLYING WI 0.5NM RADIUS 505208N
0005243W (W OF FUNTINGTON, W SUSSEX). LIMITED NUMBER OF FLIGHTS EXP
TO TAKE PLACE. FOR INFO, 02392 334812. 2018-08-0425/AS 5. F) SFC G)
1200FT AMSL
---Nov 200739z-Feb 181726z
SR-SS
UNMANNED CAPTIVE BALLOON IN LOW FLYING AREA 8 AND THE BIRMINGHAM
AVOIDANCE AREA WI 1NM RADIUS OF PSN 523437N 0020726W (BIRMINGHAM,
MIDLANDS) MAX HEIGHT 200FT AGL. 18/11/027/LFTP
F) SFC G) 725FT AMSL
---Nov 200703z-Dec 311641z
SR MINUS30-SS PLUS30
FLYING OF LARGE MODEL ACFT WI 0.5NM RADIUS 510717N 0021048W (KEYSLEY
DOWN, WILTSHIRE). FOR INFO, 07962 013388. 2018-01-0052/AS5. F) SFC
G) 2200FT AMSL
---Nov 111800z-Dec 291915z
NOV 11 14 18 21 25 28 DEC 02 05 09 12 16 19 22 26 29 1800-1915
FIREWORK DISPLAY WI 0.5NM RADIUS 520129N 0003117W (MILLBROOK,
BEDFORDSHIRE). FOR INFO 07841 832015. 2018-11-0518/AS2
F) SFC G) 600FT AMSL
---Nov 111730z-Dec 291845z
NOV 11 14 18 21 25 28 DEC 02 05 09 12 16 19 22 26 29 1730-1845
FIREWORK DISPLAY WI 0.5NM RADIUS 543830N 0023922W (WHINFELL FOREST,
CUMBRIA). FOR INFO 07770 566461. 2018-11-0519/AS2
F) SFC G) 800FT AMSL
---Nov 111730z-Dec 291845z
FIREWORK DISPLAY WI 0.5NM RADIUS 531005N 0010316W (VCY RUFFORD,
NOTTINGHAMSHIRE). FOR INFO 07896 947235. 2018-11-0520/AS2
F) SFC G) 600FT AMSL
---Nov 101400z-Feb 091712z
1400-SS
KITE FLYING WI 1NM RADIUS 514900N 0021900W (NEAR LONGNEY). MAX HGT
1500FT AGL. FOR INFO 07970 038163. 2018-02-0111/AS2
F) SFC G) 1600FT AMSL
---Nov 051041z-Feb 011647z
SR-SS
UNMANNED CAPTIVE BALLOON IN LOW FLYING AREA 8, 11 AND THE LEEDS/
BRADFORD AVOIDANCE AREA WI 1NM RADIUS OF PSN 534823N 0012706W (LEEDS,
WEST YORKSHIRE) MAX HEIGHT 200FT AGL. 18/11/005/LFTP
F) SFC G) 274FT AMSL
---Nov 051029z-Jan 311700z
DANGER AREA EG D207 HOLBEACH, LF28A LASER TARGET DESIGNATOR
UNAVAILABLE
F) SFC G) 23000FT AMSL
---Nov 041730z-Dec 311945z



NOV 04 07 11 14 18 21 25 28 DEC 02 05 09 12 16 19 22 23 26 29-31
1730-1945

LASER AND FIRWORK DISPLAY WI 1NM 511055N 0021418W (WARMINSTER,
WILTSHIRE). FIREWORK UP TO 400FT AGL. FOR INFO 01985 848038.
2018-11-0333/AS2

F) SFC G) UNL

---Nov 020942z-Jan 312100z

0800-2100

KITE FLYING WI 0.25NM RADIUS 505818N 0000502E (UCKFIELD, EAST
SUSSEX). MAX HGT 700FT AGL. FOR INFO 07752 634574. 2018-10-0383/AS2
F) SFC G) 900FT AMSL

---Nov 010859z-Jan 281642z

SR-SS

KITE FLYING FOR FALCONRY PURPOSES AT VARIOUS POSITIONS WI 0.5NM
RADIUS 530842N 0012941W (HOLESTONE MOOR, NEAR ASHOVER). LARGE BIRDS
OF PREY FLYING TO/FROM THE KITE. FOR INFO, 07860 331351.
2018-01-0255/AS5.

F) SFC G) 2000FT AMSL

---Oct 290937z-UFN

AIRSPACE SECURITY WARNINGS ISSUED BY THE DEPARTMENT FOR TRANSPORT IN
RESPONSE TO HAZARDOUS SITUATIONS WITHIN THE TERRITORY AND/OR AIRSPACE
OF AFGHANISTAN, EGYPT, IRAQ, KENYA, LIBYA, MALI, NORTH KOREA,
PAKISTAN, SOMALIA, SOUTH SUDAN, SYRIA, UP TO 200NM OUTSIDE THE
DAMASCUS FIR, UKRAINE AND YEMEN. ALL OPERATORS ARE TO REFER TO THE
TABLE IN UK AIP AT ENR 1.1 SECTION 1.4 FOR FURTHER DETAILS.

2018-03-0229-AS6

F) SFC G) UNL

---Oct 290900z-Dec 311730z

MON-FRI 0900-1730

UAS OPR EXTENDED VISUAL LINE OF SIGHT WI 2NM RADIUS OF
521044N 0002955W (CLAPHAM, BEDFORDSHIRE) MAX HGT 1000FT AGL. FOR INFO
07801 368609 OR 07930 744028. 2018-08-0465/AS2

F) SFC G) 1300FT AMSL

---Oct 240001z-Jan 082359z

C BAND HIGH INTENSITY RADIO TRANSMISSION AREA (HIRTA) IN LOW FLYING
AREA 17 AND THE ISLE OF MAN AVOIDANCE AREA AT PSN
542136N 0043126W, (JURBY HEAD, ISLE OF MAN) RADIUS 1NM. MAX HEIGHT
151FT

AGL. 18/10/046/LFTP

SAFE DISTANCES

CIVILIAN ACFT	0.110NM	56FT AGL
MIL ACFT SUSCEPTIBILITY		
VERY LOW	0.109NM	51FT AGL
LOW	0.111NM	63FT AGL MEDIUM
	0.117NM	99FT AGL
HIGH	0.125NM	151FT AGL

F) SFC G) 243FT AMSL

---Oct 230645z-Jan 211640z

SR-SS

UAS OPR EXTENDED VISUAL LINE OF SIGHT WI 1NM RADIUS OF PSN 510636N
0020224W (CHILMARK, WILTSHIRE) MAX HGT 1000FT AGL. FOR INFO 01722
744946. 2018-10-0408/AS2

F) SFC G) 1700FT AMSL

---Oct 220900z-UFN

AIRSPACE SECURITY WARNINGS ISSUED BY THE DEPARTMENT FOR TRANSPORT IN
RESPONSE TO HAZARDOUS SITUATION IN THE VICINITY OF DAMASCUS FIR.
POTENTIAL RISK TO AVIATION OPERATING UP TO 200NM OUTSIDE THE DAMASCUS



FIR FROM ANTI-AIRCRAFT WEAPONRY. OPERATORS ARE ADVISED TO EXERCISE CAUTION AND CONDUCT THEIR OWN RISK ASSESSMENTS. CONTACT UK DEPARTMENT FOR TRANSPORT +44 (0)207-944 4426 OR +44 0)207-944 5999 OUT OF HOURS. 18-10-0382/AS6.

F) SFC G) UNL

---Oct 150719z-Dec 312359z

E BAND HIGH INTENSITY RADIO TRANSMISSION AREA (HIRTA) IN LOW FLYING AREA 17 AND NIGHT SECTOR 3BW AT PSN 543100N 0033656W, (SANDWITH, CUMBRIA) RADIUS 1NM. MAX HEIGHT 2615FT AGL. 18/10/034/LFTP

SAFE DISTANCES

CIVILIAN ACFT	0.096NM	215FT AGL
MIL ACFT SUSCEPTIBILITY		
MEDIUM	0.086NM	171FT AGL
HIGH	0.119NM	322FT AGL PULSE
LOW	0.230NM	840FT AGL PULSE MEDIUM
	0.333NM	1317FT AGL PULSE HIGH
	0.611NM	2615FT AGL

F) SFC G) 3020FT AMSL

---Oct 130616z-Jan 011600z

SR-SS

UNMANNED CAPTIVE BALLOON IN LOW FLYING AREA 18 WI 1NM RADIUS OF PSN 510855N 0005119E (ASHFORD, KENT) MAX HEIGHT 200FT AGL. 18/10/025/LFTP

F) SFC G) 339FT AMSL

---Oct 120555z-Jan 111646z

FRI SUN SR MINUS30-SS PLUS30

FLYING OF LARGE MODEL ACFT WI 1NM RADIUS 521434N 0012038W (NAPTON, NEAR SOUTHAM, WARWICKSHIRE). FOR INFO, 07901 986949.

2018-04-0211/AS5.

F) SFC G) 1500FT AMSL

---Oct 100745z-Jan 011603z

SR-SS

UNMANNED CAPTIVE BALLOON IN LOW FLYING AREA 8 AND BIRMINGHAM/NOTTINGHAM AVOIDANCE AREA WI 1NM RADIUS OF PSN 523129N 0013420W (PERRY BARR, BIRMINGHAM) MAX HEIGHT 200FT AGL. 18/10/026/LFTP

F) SFC G) 526FT AMSL

---Oct 100730z-Jan 011604z

SR-SS

UNMANNED CAPTIVE BALLOON IN THE THAMES VALLEY AVOIDANCE AREA WI 1NM RADIUS OF PSN 513418N 0004543W (MARLOW, BUCKINGHAMSHIRE) MAX HEIGHT 200FT AGL. 18/10/024/LFTP

F) SFC G) 289FT AMSL

---Oct 091110z-UFN

REMOVAL OF RAMPISHAM DOWN HIGH INTENSITY RADIO TRANSMISSION AREA (HIRTA) A CIRCLE 0.7NM CENTRED ON 504832N 0023905W FROM 1.250K SHEET 7 AND 1.500K CHART SOUTH. LOWER LIMIT SFC, UPPER LIMIT 2500FT ALT UK AIP ENR 5.3 12 ALSO REFERS

---Oct 080832z-Jan 011615z

SR-SS

UNMANNED CAPTIVE BALLOON IN LOW FLYING AREA 7 WI 1NM RADIUS OF PSN 512712N 0031114W (CARDIFF, GLAMORGANSHIRE) MAX HEIGHT 200FT AGL. 18/10/014/LFTP

F) SFC G) 213FT AMSL

---Oct 080831z-Jan 011604z

SR-SS

UNMANNED CAPTIVE BALLOON IN LOW FLYING AREA 4 WI 1NM RADIUS OF PSN 520333N 0011955W (BANBURY, OXFORDSHIRE) MAX HEIGHT 200FT



AGL. 18/10/013/LFTP
 F) SFC G) 505FT AMSL
 ---Oct 040745z-Jan 011602z
 SR-SS
 UNMANNED CAPTIVE BALLOON IN LOW FLYING AREA 8 AND LIVERPOOL
 MANCHESTER AVOIDANCE AREA WI 1NM RADIUS OF PSN 532422N 0023549W
 (WARRINGTON, CHESHIRE) MAX HEIGHT 200FT AGL. 18/10/010/LFTP
 F) SFC G) 233FT AMSL
 ---Oct 020850z-Dec 312359z
 THOMAS COOK AIRLINES UK WILL PERMANENTLY CHANGE ITS TELEPHONY
 DESIGNATOR TO THOMAS COOK FOR ALL FLIGHTS SCHEDULED TO DEPART AFTER
 0001 ON 1ST NOVEMBER 2018. FOR INFO 01614 982905 OR 07766 510900.
 2018-11-0165/AS4
 ---Sep 300547z-Dec 301640z
 SR MINUS30-SS PLUS30
 FLYING OF LARGE MODEL ACFT WI 1NM RADIUS OF 525220N 0042836W
 (PENRHOS, NEAR PWWLHELI, GWYNEDD). FOR INFO, 07866 703484.
 2018-03-0392/AS5.
 F) SFC G) 1200FT AMSL
 ---Sep 271404z-UFN
 CODES 3310-3347 ARE RE-DESIGNATED AS 'ALLOCATED TO CAA AS
 CONTINGENCY'
 AIP ENR 1.6 REFERS

AMSTERDAM FIR (EHAA)
 NO RECENT SIGMET

---Dec 231014z-UFN
 MOBILE RIG 590021 TEST PLATFORM AT PSN 5314.0N 00314.5E
 (590021 TEST).
 ---Dec 210909z-UFN
 OBST LGT FLARESTACK MOERDIJK, PSN 514052N 0043244E U/S. HGT 125M.
 OBST ID 118 REF AIP ENR 5.4.
 ---Dec 171819z-UFN
 OBST LIGHTS U/S WIND TURBINE DOT ON THE CORNER OF PRINSES
 AMALIAWINDPARK PSN 523611N 0041137E ELEV 331FT AMSL.
 REF AIP ENR 5.4 NBR 317E.
 ---Dec 170841z-UFN
 MOBILE RIG PARAGON C20051 RELOCATED PSN 5342.5N 00325.5E (ACP K5-B).
 ---Dec 170643z-UFN
 WINDPARK ZEEWOLDE, REF AIP THE NETHERLANDS ENR 5.4 ID 358 A-F. OBST
 LGT CONFIGURATION CHANGED INTO CONT BURNING LGT. THE MAX DIST OF 900M
 BETWEEN LIGHTED TURBINES IS INCREASED TO 1200M (EXCEPTIONALLY 1600M).
 ---Dec 101358z-UFN
 ONE OF FOUR OBSTACLE LIGHTS U/S OF CHIMNEY IN NIJMEGEN, PSN 515122N
 0054944E, HEIGHT 512FT AGL.
 REF AIP NETHERLANDS ENR 5.4 123.
 ---Nov 300934z-UFN
 OPERATIONAL DATE REFIS/MASIS 26 APRIL 2018 POSTPONED.
 NEW DATE WILL BE PUBLISHED BY NOTAM. PRIOR ENTERING MILITARY RMZ
 CONTACT 132.350.
 REF AIC-A 04/2018.
 ---Nov 191141z-UFN
 INCREASED CPDLC USAGE ENDEAVOURED BY ATC AT MAASTRICHT UAC TO IMPROVE
 COM SAFETY AND ATM CAPACITY.
 ALL DATALINK EQUIPPED AIRCRAFT (ATN WHITE LISTED AND FANS1/A) ARE



REQUESTED TO LOG ON TO EDYY.

REF EU DATA LINK SERVICE IMPLEMENTING RULE 29/2009, ACFT NOT LOGGING ON ARE CREATING EXTRA CONTROLLER WORKLOAD.

---Nov 151313z-UFN

ATS ROUTE L745 AND UL745 CLSD. WPT DIBRU REMOVED.

REF AIP NETHERLANDS ENR 3.1 AND ENR 3.2

---Nov 040800z-UFN

FLARING WILL TAKE PLACE AT RIG MAERSK RESOLUTE PSN 5506.3N 00350.04E
F) GND G) 1000FT AMSL

---Oct 110000z-UFN

FLIGHT PLAN MESSAGES FOR VFR FLT OR VFR PORTION OF IFR/VFR FLT WITHIN NORTH SEA AREA V SHALL ALSO BE ADDRESSED TO EHAZFZX.

REF AIP ENR 1.11, EFF DATE 11 OCT 2018.

---Oct 090823z-UFN

OBST LIGHTS WIND FARM BARD OFFSHORE 1 ID 333 PARTLY U/S. ELEVATION 492FT AMSL. REF AIP THE NETHERLANDS ENR 5.4.

---Oct 050911z-UFN

OBST LIGHTS OF FLARE STACK BASF MOERDIJK PARTLY U/S.

OBST ID 116. ELEVATION 411FT AMSL.

REF AIP THE NETHERLANDS ENR 5.4.

---Oct 021115z-UFN

DAILY SR-SS

PARACHUTE JUMPING EXERCISE AREA SPIER PSN 524801N 0062819E.

UPPER LIMIT TEMPORARILY RAISED TO FL150 (SEE ENR 5.5 PARA 4).

F) FL130 G) FL150

---Oct 021114z-UFN

DAILY SR-SS

PARACHUTE JUMPING EXERCISE AREA ECHTEN PSN 524356N 0062557E. UPPER LIMIT TEMPORARILY RAISED TO FL150 (SEE ENR 5.5 PARA 4).

F) FL130 G) FL150

---Oct 021110z-UFN

PARACHUTE JUMPING EXERCISE AREA OOSTELIJK FLEVOLAND NOT AVBL.

F) GND G) FL060

---Aug 081033z-UFN

MON-SAT 0600-1500

AVOID AREA NEAR WITTEN/ASSEN

525839N0063118E

525832N0063140E

525816N0063154E

525713N0063048E

525731N0062945E

525817N0063031E

BACK TO 525839N0063118E, DUE TO ACTIVE SHOOTING RANGE.

THIS AREA WILL BE PUBLISHED IN AIP NETHERLANDS ENR 5.1 AS EHR65. F)

SFC G) 2500FT AMSL

=====
===== END ENROUTE AIRSPACES =====

=====
===== COMPANY INFORMATION =====

---Sep 260735-UFN

THANKS TO A RECENT UPDATE, YOU CAN NOW SPECIFY UP TO 4 ALTERNATE AIRPORTS, COMPLETE WITH PROPER FLIGHT ROUTES FOR EACH, DIRECTLY FROM THE NEW "ALTERNATE AIRPORTS" SECTION OF THE DISPATCH OPTIONS PAGE. PLEASE NOTE THAT FOR THE MOMENT ONLY THE DEFAULT LIDO FORMAT CAN DISPLAY THESE NEW OPTIONS, THE OTHER LAYOUTS WILL BE UPDATED OVER THE COMING WEEKS.

---Oct 120330-UFN



WHEN PLANNING A COST INDEX, 2 OPTIONS ARE AVAILABLE. PILOTS MAY EITHER SELECT A SPECIFIC COST INDEX NUMBER FROM THE LIST, OR THEY MAY SELECT "AUTO". WHEN PLANNING AN "AUTO" COST INDEX, THE SYSTEM WILL REFERENCE THE "TIME ENROUTE" OPTION AND ATTEMPT TO CHOOSE A COST INDEX WHICH CLOSELY MATCHES THIS VALUE. NOTE THAT THE "TIME ENROUTE" OPTION IS MEANT AS A GATE TO GATE TIME (AS INDICATED ON AN AIRLINE'S FLIGHT SCHEDULE, FOR EXAMPLE). IF A "TIME ENROUTE" OF 2:30 IS SELECTED, THE SYSTEM WILL SUBTRACT THE TAXI TIMES FROM THIS VALUE TO DETERMINE THE SCHEDULED AIR TIME. IT WILL THEN DETERMINE AND USE THE COST INDEX WHICH MATCHES THIS AIR TIME.

---Jul 130320-UFN

ALL FLIGHT CREW: PLEASE PAY SPECIAL ATTENTION TO THE UNITS SELECTION WHEN GENERATING A FLIGHT PLAN. FAILURE TO IDENTIFY THE CORRECT UNITS WHEN REFUELING PRIOR TO FLIGHT CAN RESULT IN DEPARTING WITH INSUFFICIENT FUEL AND/OR AN ERRONEOUS PAYLOAD.

=====
===== END COMPANY INFORMATION =====
===== END OF BRIEF =====